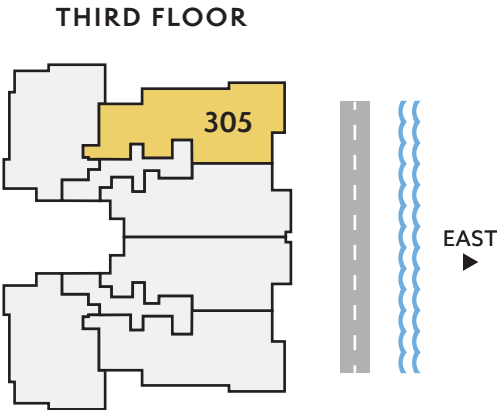
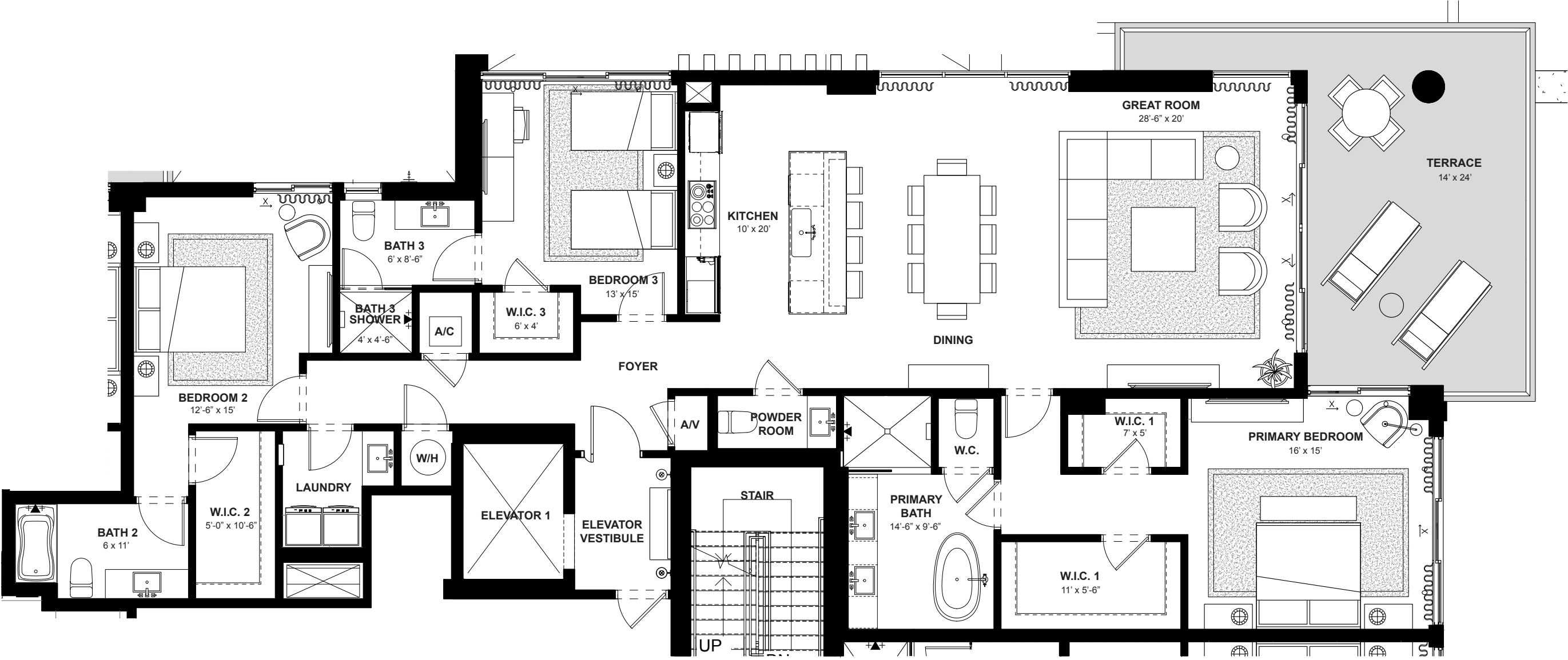


Residence 305



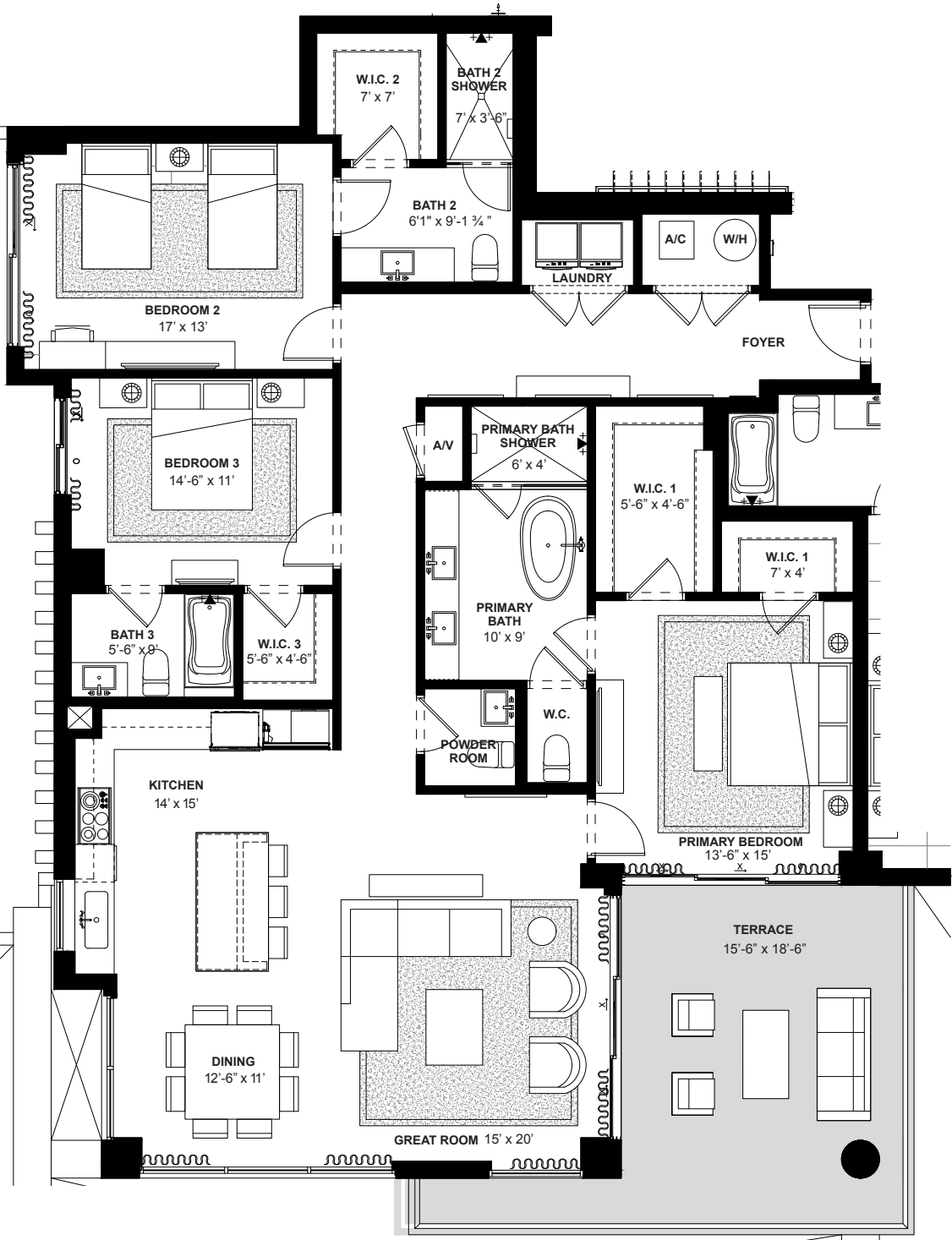
NORTH/ EAST DIRECTION	3	3.5	2,308	365	2,673
	BEDROOMS	BATHS	A/C LIVING AREA	COVERED TERRACES	TOTAL S.F.

Artist's conceptual illustration only. Subject to modification.

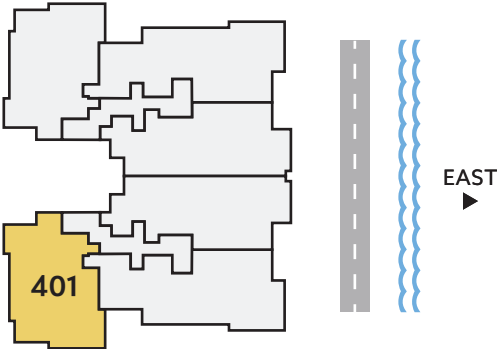
ORAL REPRESENTATIONS CANNOT BE RELIED UPON AS CORRECTLY STATING REPRESENTATIONS OF THE SELLER. FOR CORRECT REPRESENTATIONS, MAKE REFERENCE TO THIS BROCHURE AND TO THE DOCUMENTS REQUIRED BY SECTION 718.503, FLORIDA STATUTES TO BE FURNISHED BY A SELLER TO A BUYER OR LESSEE.

All dimensions, features, and specifications are approximate and subject to change without notice. Square footage listed above represents marketing square footage (please refer to section 3.2 of the Declaration and Exhibit 5 for more information). Brokers warmly welcomed.

# Residence 401



FOURTH FLOOR



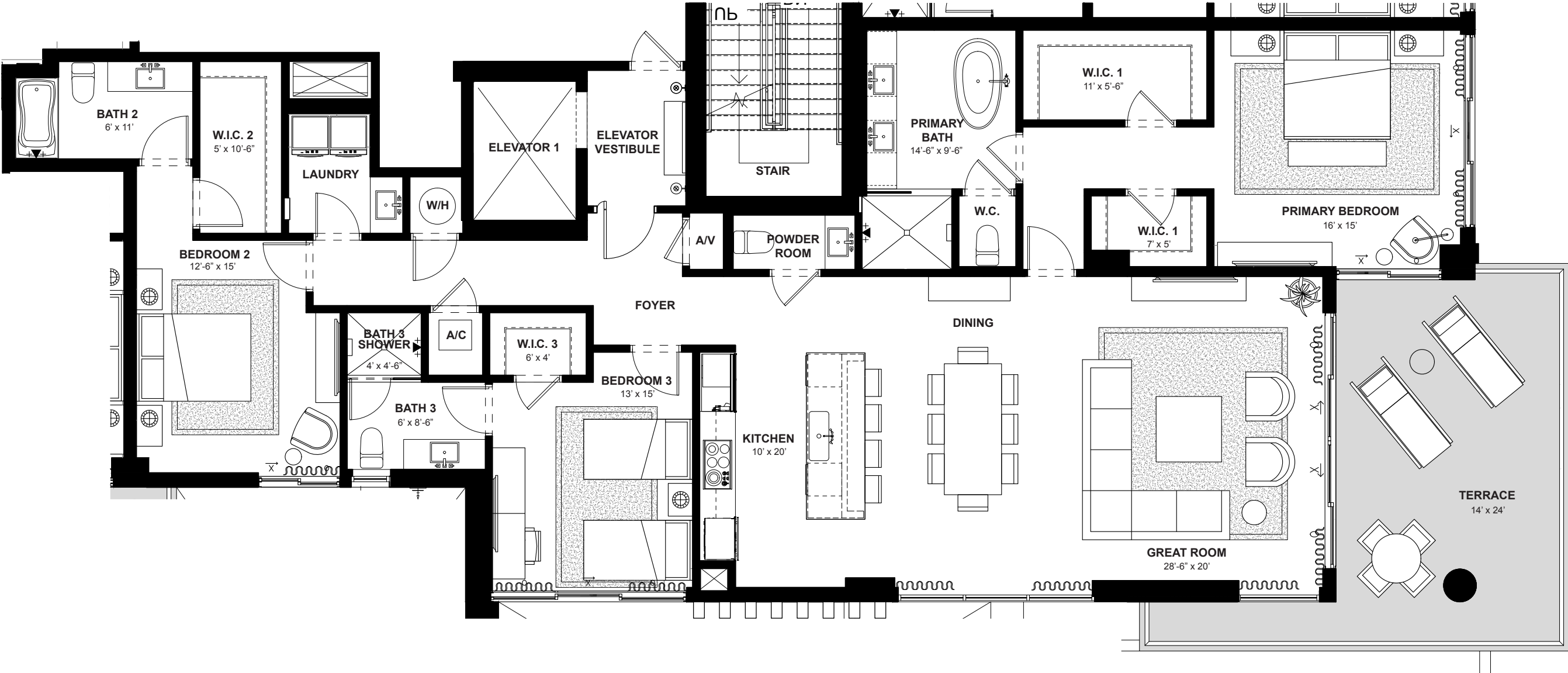
SOUTH/ WEST DIRECTION	3	3.5	2,106	320	2,426
	BEDROOMS	BATHS	A/C LIVING AREA	COVERED TERRACES	TOTAL S.F.

Artist's conceptual illustration only. Subject to modification.

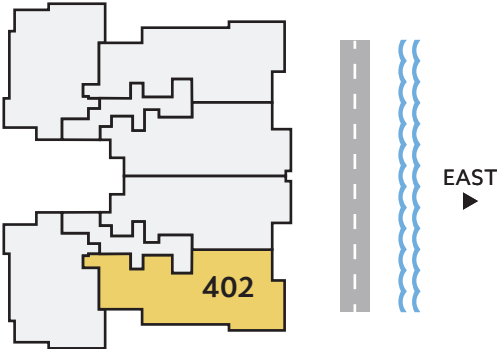
ORAL REPRESENTATIONS CANNOT BE RELIED UPON AS CORRECTLY STATING REPRESENTATIONS OF THE SELLER. FOR CORRECT REPRESENTATIONS, MAKE REFERENCE TO THIS BROCHURE AND TO THE DOCUMENTS REQUIRED BY SECTION 718.503, FLORIDA STATUTES TO BE FURNISHED BY A SELLER TO A BUYER OR LESSEE.

All dimensions, features, and specifications are approximate and subject to change without notice. Square footage listed above represents marketing square footage (please refer to section 3.2 of the Declaration and Exhibit 5 for more information). Brokers warmly welcomed.

# Residence 402




FOURTH FLOOR



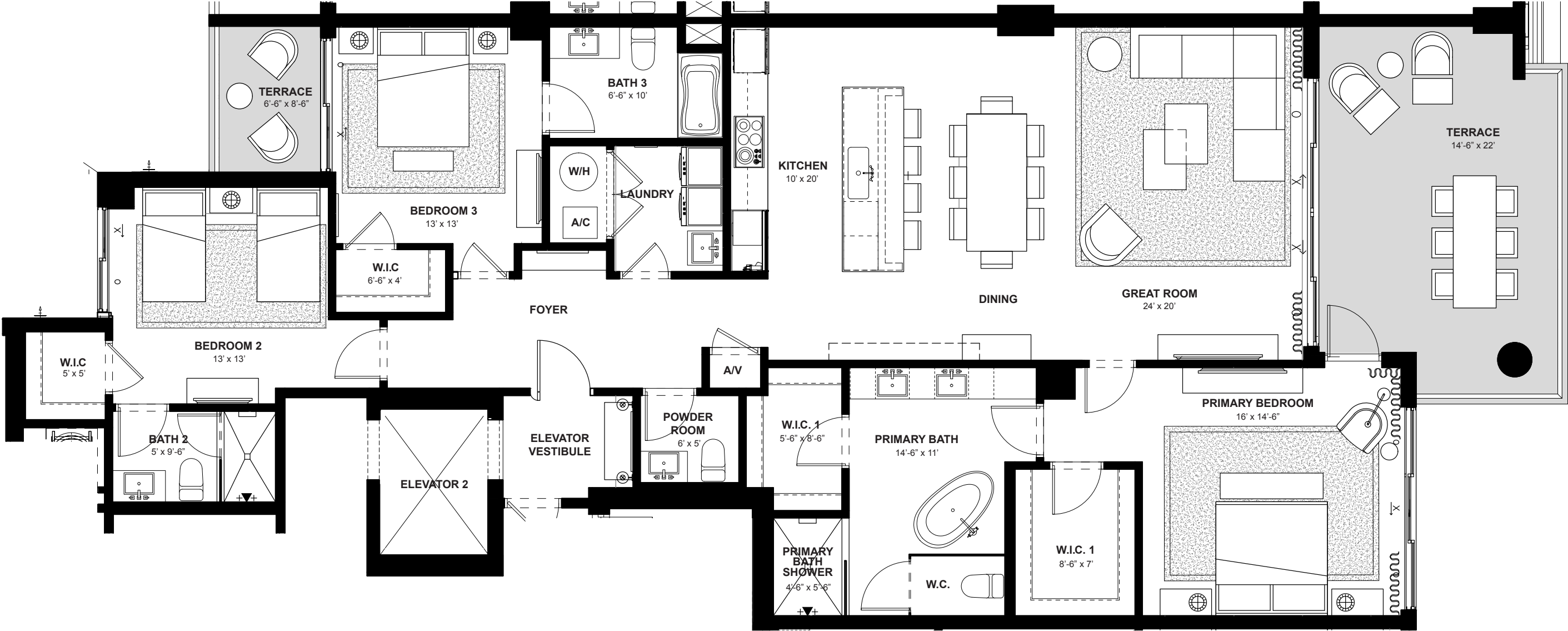
<b>SOUTH/ EAST DIRECTION</b>	<b>3 BEDROOMS</b>	<b>3.5 BATHS</b>	<b>2,308 A/C LIVING AREA</b>	<b>365 COVERED TERRACES</b>	<b>2,673 TOTAL S.F.</b>
--------------------------------------	-----------------------	----------------------	--------------------------------------	-------------------------------------	-----------------------------

Artist's conceptual illustration only. Subject to modification.

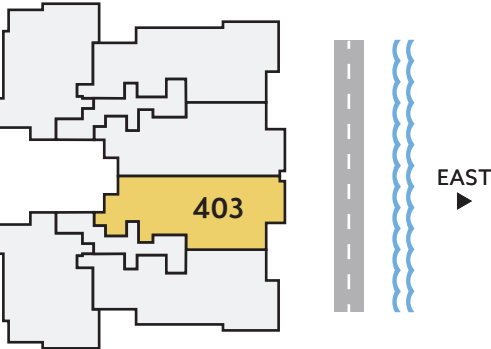
 ORAL REPRESENTATIONS CANNOT BE RELIED UPON AS CORRECTLY STATING REPRESENTATIONS OF THE SELLER. FOR CORRECT REPRESENTATIONS, MAKE REFERENCE TO THIS BROCHURE AND TO THE DOCUMENTS REQUIRED BY SECTION 718.503, FLORIDA STATUTES TO BE FURNISHED BY A SELLER TO A BUYER OR LESSEE.

All dimensions, features, and specifications are approximate and subject to change without notice. Square footage listed above represents marketing square footage (please refer to section 3.2 of the Declaration and Exhibit 5 for more information). Brokers warmly welcomed.

# Residence 403



FOURTH FLOOR



<b>EAST</b>	<b>3</b>	<b>3.5</b>	<b>2,132</b>	<b>358</b>	<b>2,490</b>
DIRECTION	BEDROOMS	BATHS	A/C LIVING AREA	COVERED TERRACES	TOTAL S.F.

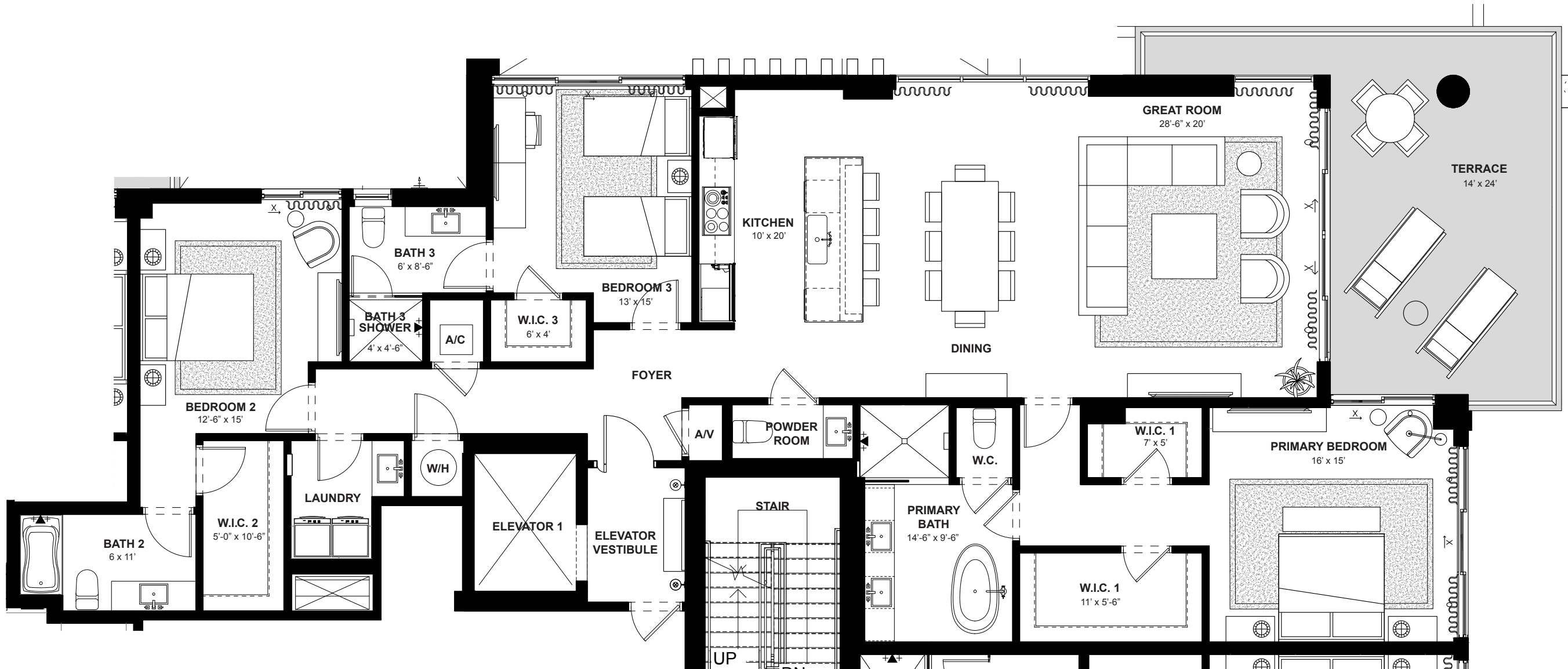
Artist's conceptual illustration only. Subject to modification.

ORAL REPRESENTATIONS CANNOT BE RELIED UPON AS CORRECTLY STATING REPRESENTATIONS OF THE SELLER. FOR CORRECT REPRESENTATIONS, MAKE REFERENCE TO THIS BROCHURE AND TO THE DOCUMENTS REQUIRED BY SECTION 718.503, FLORIDA STATUTES TO BE FURNISHED BY A SELLER TO A BUYER OR LESSEE.

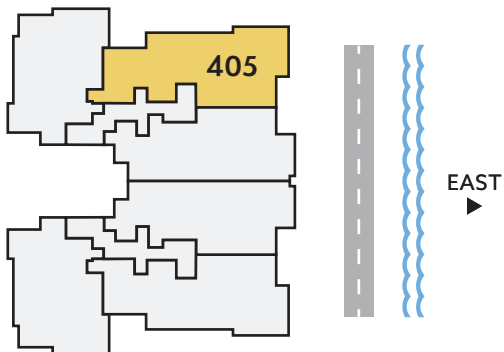
All dimensions, features, and specifications are approximate and subject to change without notice. Square footage listed above represents marketing square footage (please refer to section 3.2 of the Declaration and Exhibit 5 for more information). Brokers warmly welcomed.



## Residence 405



## FOURTH FLOOR



**NORTH/  
EAST**  
DIRECTION

3  
BEDROOMS

### 3.5 BATHS

**2,308**  
A/C LIVING  
AREA

**365**  
COVERED  
TERRACES

**2,673**  
TOTAL S.F.

Artist's conceptual illustration only. Subject to modification.

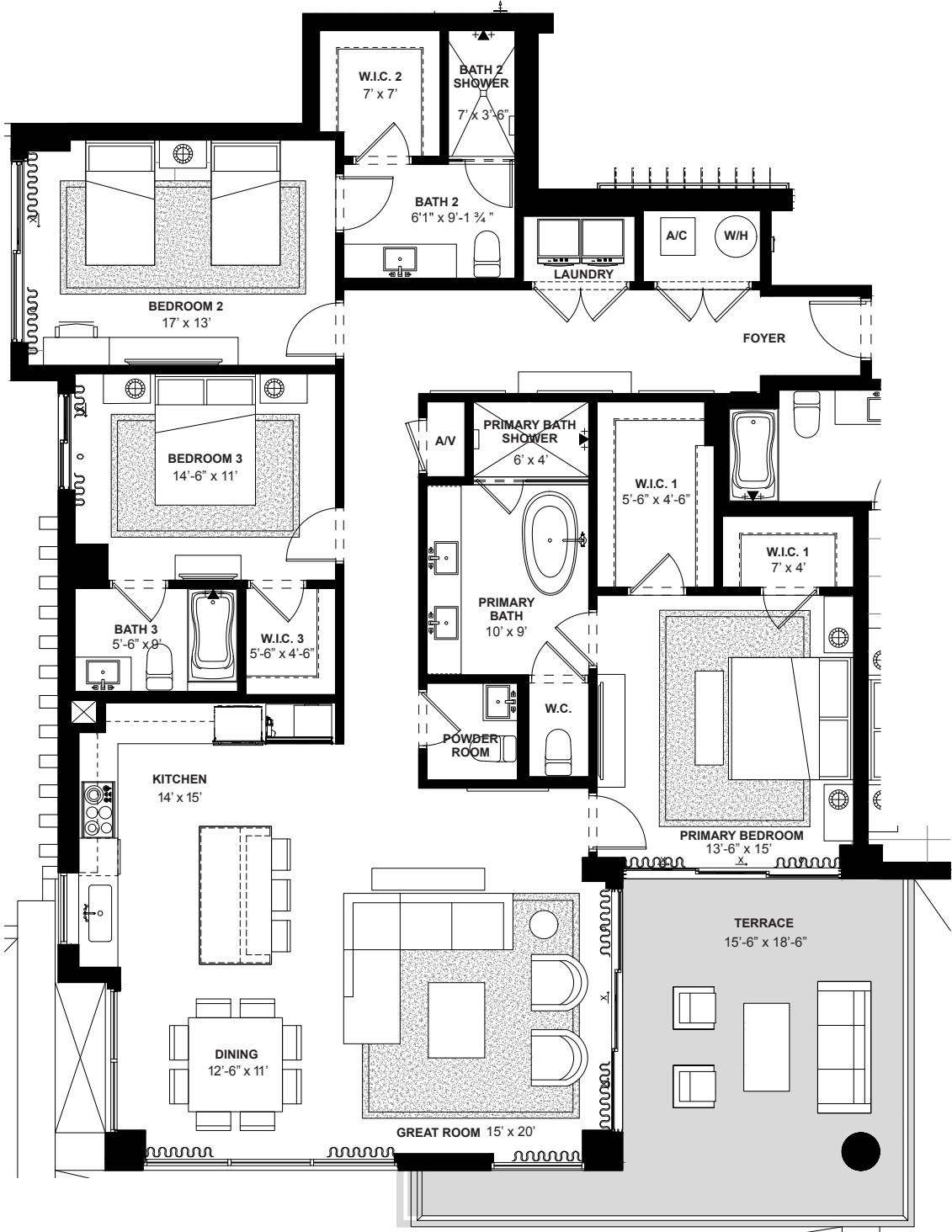


ORAL REPRESENTATIONS CANNOT BE RELIED UPON AS CORRECTLY STATING REPRESENTATIONS OF THE SELLER. FOR CORRECT REPRESENTATIONS, MAKE REFERENCE TO THIS BROCHURE AND TO THE DOCUMENTS REQUIRED BY SECTION 718.503, FLORIDA STATUTES TO BE FURNISHED BY A SELLER TO A BUYER OR LESSEE.

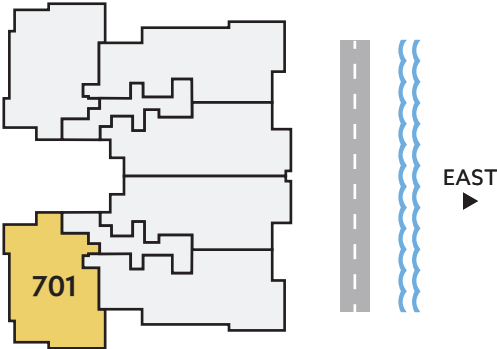
All dimensions, features, and specifications are approximate and subject to change without notice. Square footage listed above represents marketing square footage (please refer to section 3.2 of the Declaration and Exhibit 5 for more information). Brokers warmly welcomed.

The logo for Salato Pompano Beach. The word "SALATO" is written in a large, dark, serif font. Below it, a yellow wavy line separates the word from "POMPAÑO BEACH", which is written in a smaller, dark, sans-serif font.

Residence 701




SEVENTH FLOOR



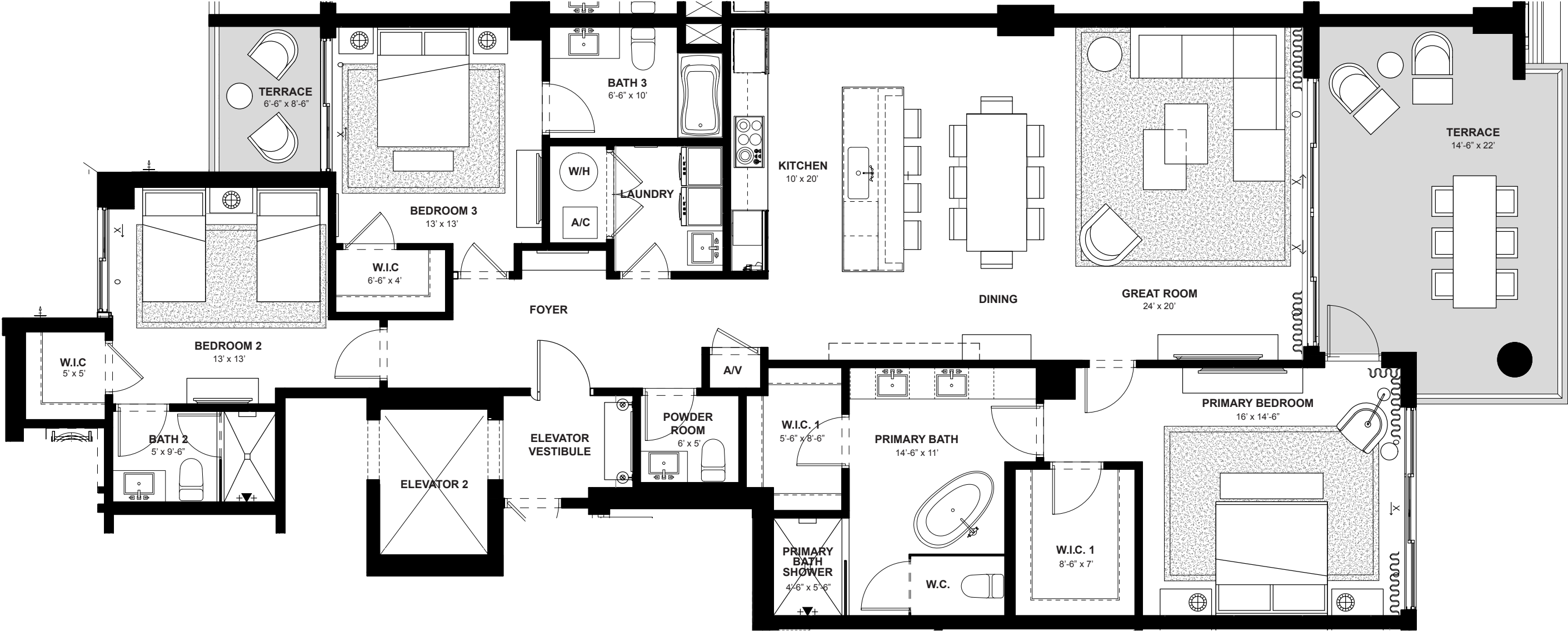
SOUTH/ WEST DIRECTION	3	3.5	2,106	320	2,426
	BEDROOMS	BATHS	A/C LIVING AREA	COVERED TERRACES	TOTAL S.F.

Artist’s conceptual illustration only. Subject to modification.

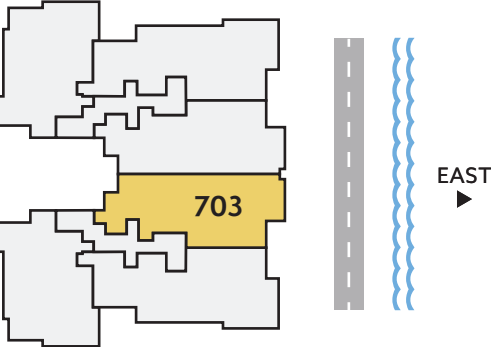
 ORAL REPRESENTATIONS CANNOT BE RELIED UPON AS CORRECTLY STATING REPRESENTATIONS OF THE SELLER. FOR CORRECT REPRESENTATIONS, MAKE REFERENCE TO THIS BROCHURE AND TO THE DOCUMENTS REQUIRED BY SECTION 718.503, FLORIDA STATUTES TO BE FURNISHED BY A SELLER TO A BUYER OR LESSEE.

All dimensions, features, and specifications are approximate and subject to change without notice. Square footage listed above represents marketing square footage (please refer to section 3.2 of the Declaration and Exhibit 5 for more information). Brokers warmly welcomed.

# Residence 703



SEVENTH FLOOR



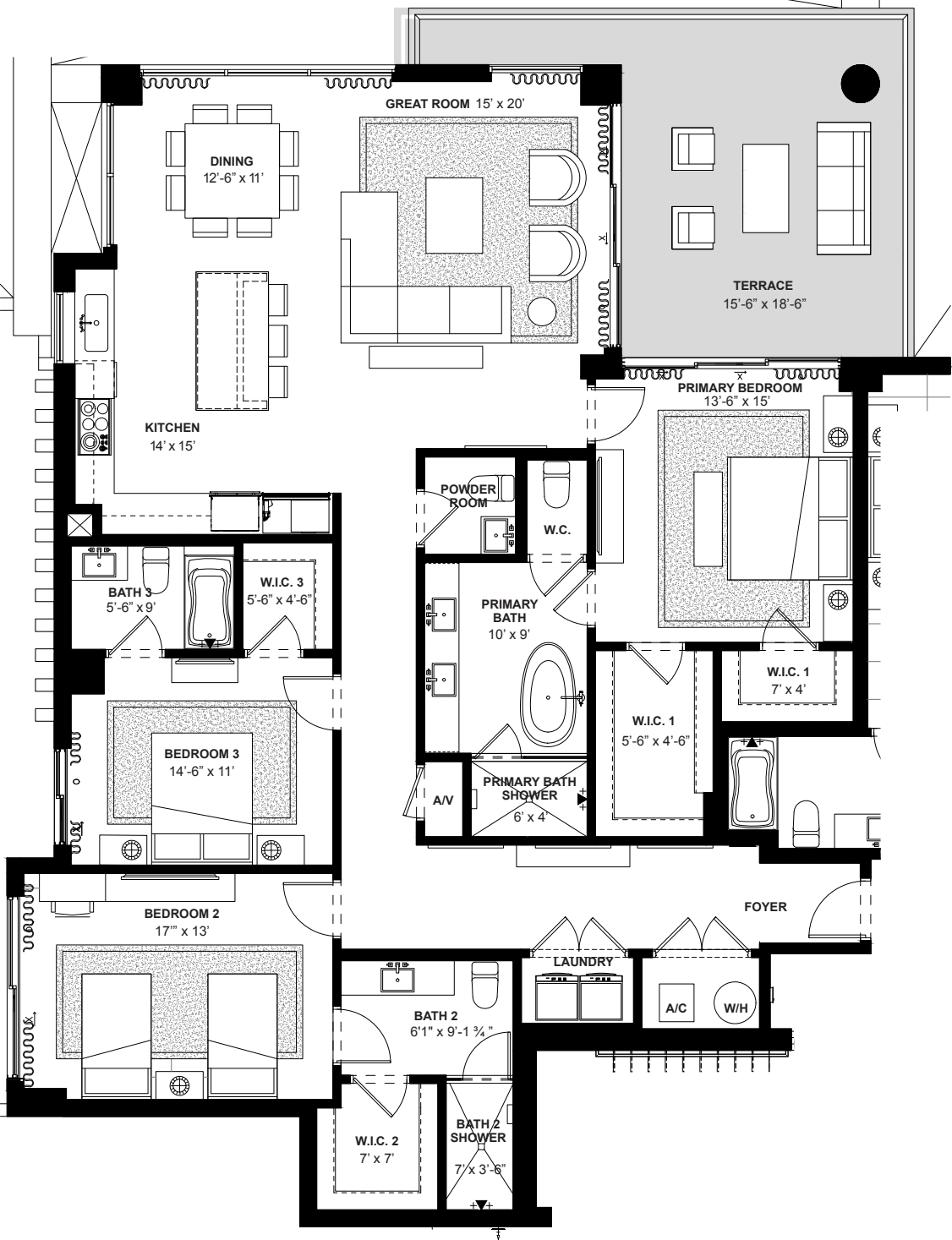
<b>EAST</b>	<b>3</b>	<b>3.5</b>	<b>2,132</b>	<b>358</b>	<b>2,490</b>
DIRECTION	BEDROOMS	BATHS	A/C LIVING AREA	COVERED TERRACES	TOTAL S.F.

Artist's conceptual illustration only. Subject to modification.

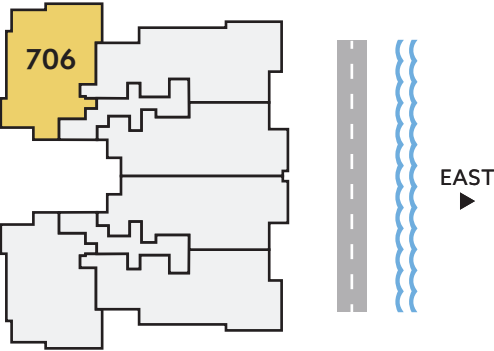
ORAL REPRESENTATIONS CANNOT BE RELIED UPON AS CORRECTLY STATING REPRESENTATIONS OF THE SELLER. FOR CORRECT REPRESENTATIONS, MAKE REFERENCE TO THIS BROCHURE AND TO THE DOCUMENTS REQUIRED BY SECTION 718.503, FLORIDA STATUTES TO BE FURNISHED BY A SELLER TO A BUYER OR LESSEE.

All dimensions, features, and specifications are approximate and subject to change without notice. Square footage listed above represents marketing square footage (please refer to section 3.2 of the Declaration and Exhibit 5 for more information). Brokers warmly welcomed.

Residence 706




SEVENTH FLOOR



NORTH/ WEST DIRECTION	3	3.5	2,106	320	2,426
	BEDROOMS	BATHS	A/C LIVING AREA	COVERED TERRACES	TOTAL S.F.

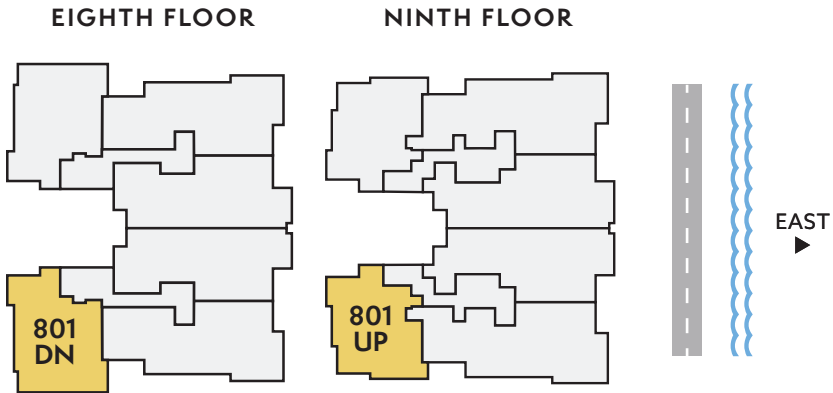
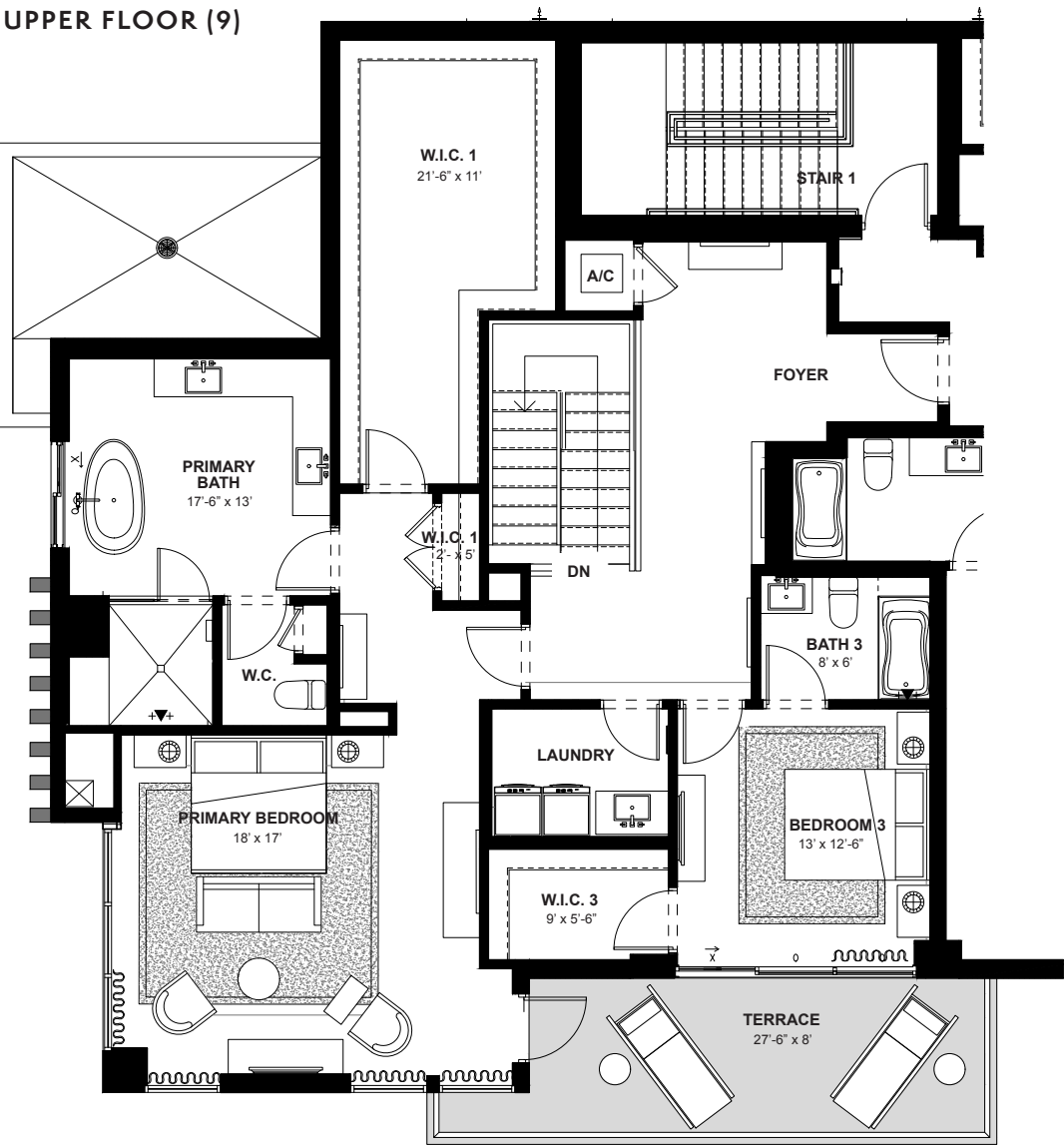
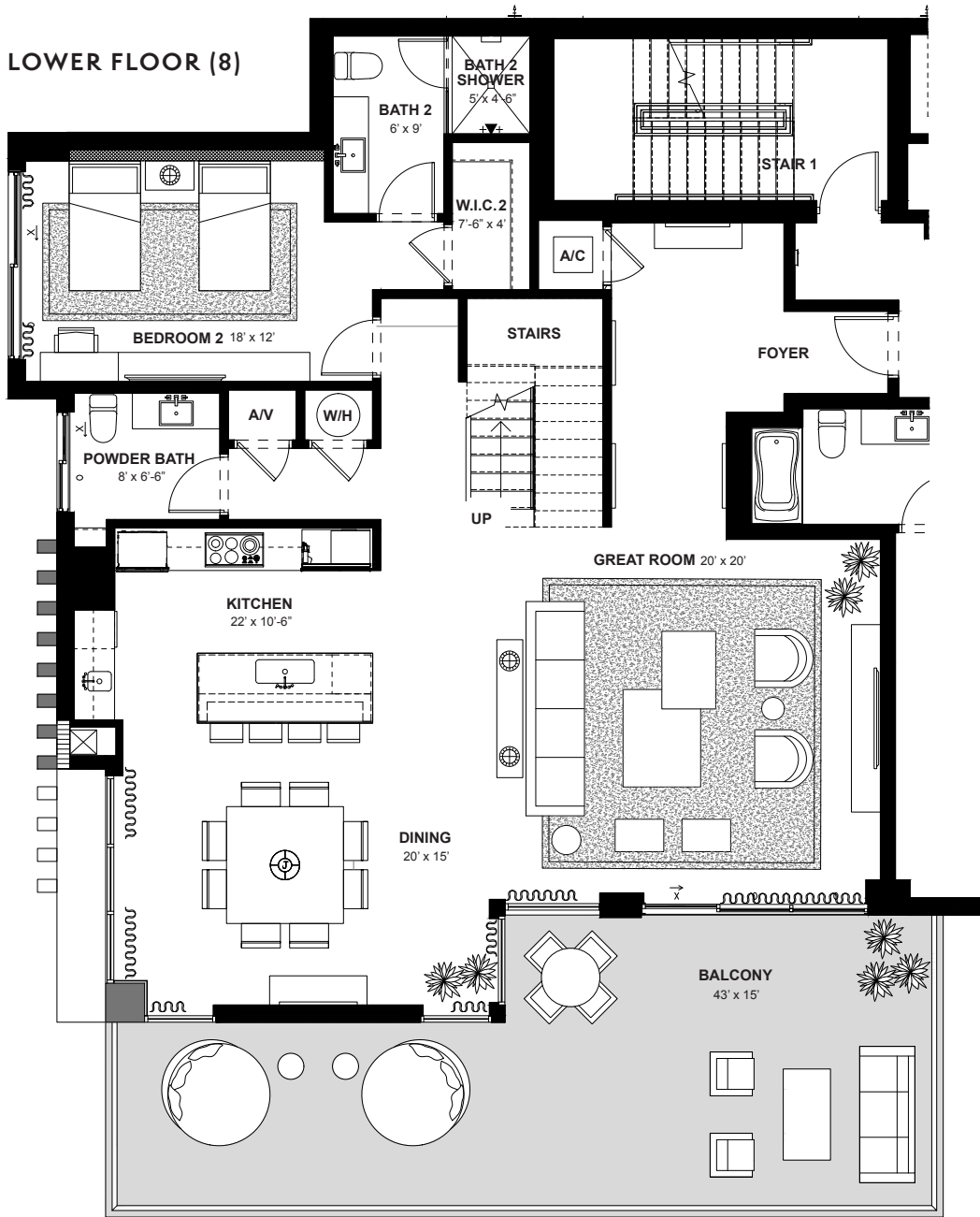
Artist's conceptual illustration only. Subject to modification.

 ORAL REPRESENTATIONS CANNOT BE RELIED UPON AS CORRECTLY STATING REPRESENTATIONS OF THE SELLER. FOR CORRECT REPRESENTATIONS, MAKE REFERENCE TO THIS BROCHURE AND TO THE DOCUMENTS REQUIRED BY SECTION 718.503, FLORIDA STATUTES TO BE FURNISHED BY A SELLER TO A BUYER OR LESSEE.

All dimensions, features, and specifications are approximate and subject to change without notice. Square footage listed above represents marketing square footage (please refer to section 3.2 of the Declaration and Exhibit 5 for more information). Brokers warmly welcomed.



# Residence 801



SOUTH/ WEST DIRECTION	3	3.5	3,354	746	4,100
	BEDROOMS	BATHS	A/C LIVING AREA	COVERED TERRACES	TOTAL S.F.

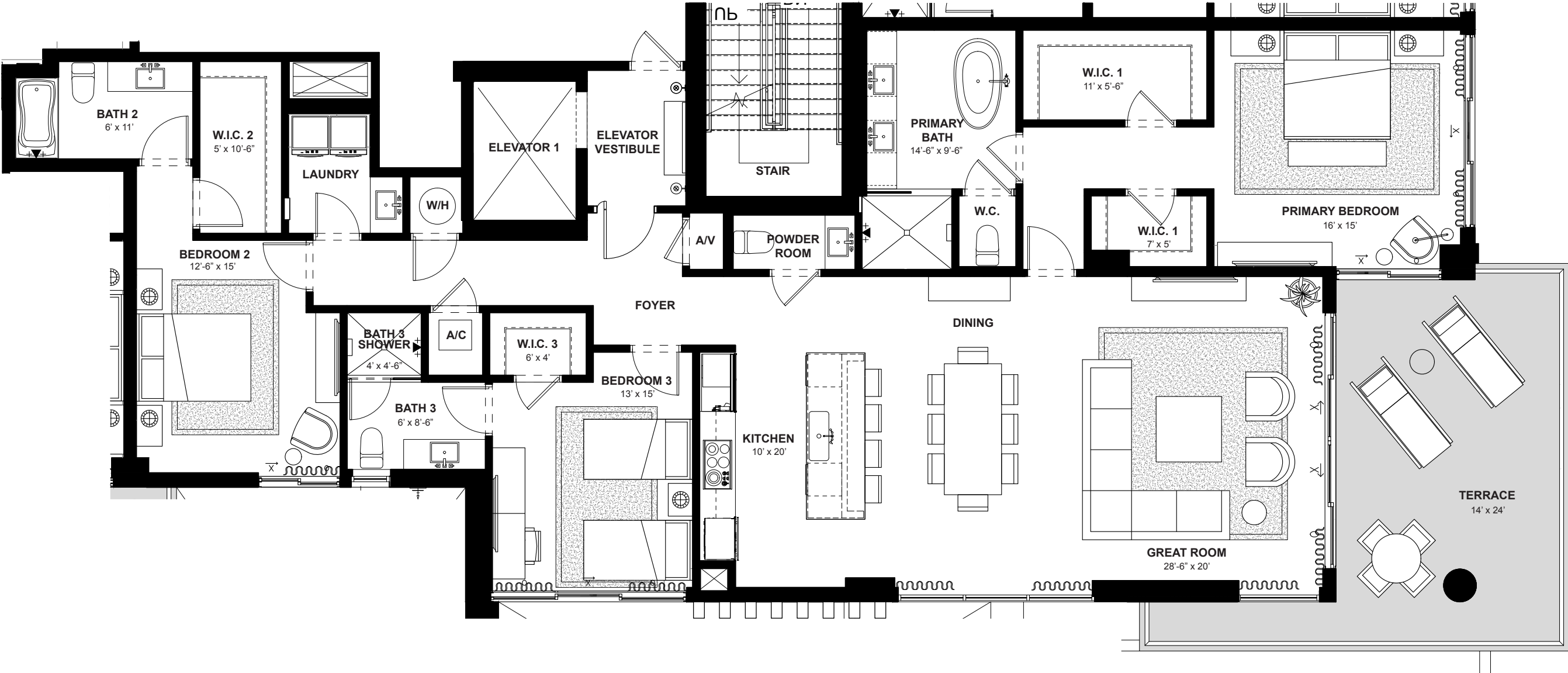
Artist's conceptual illustration only. Subject to modification.



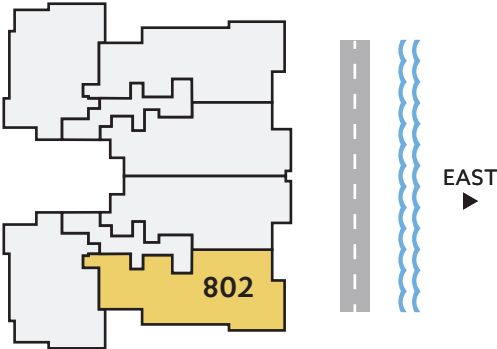
ORAL REPRESENTATIONS CANNOT BE RELIED UPON AS CORRECTLY STATING REPRESENTATIONS OF THE SELLER. FOR CORRECT REPRESENTATIONS, MAKE REFERENCE TO THIS BROCHURE AND TO THE DOCUMENTS REQUIRED BY SECTION 718.503, FLORIDA STATUTES TO BE FURNISHED BY A SELLER TO A BUYER OR LESSEE.

All dimensions, features, and specifications are approximate and subject to change without notice. Square footage listed above represents marketing square footage (please refer to section 3.2 of the Declaration and Exhibit 5 for more information). Brokers warmly welcomed.

Residence 802




EIGHTH FLOOR



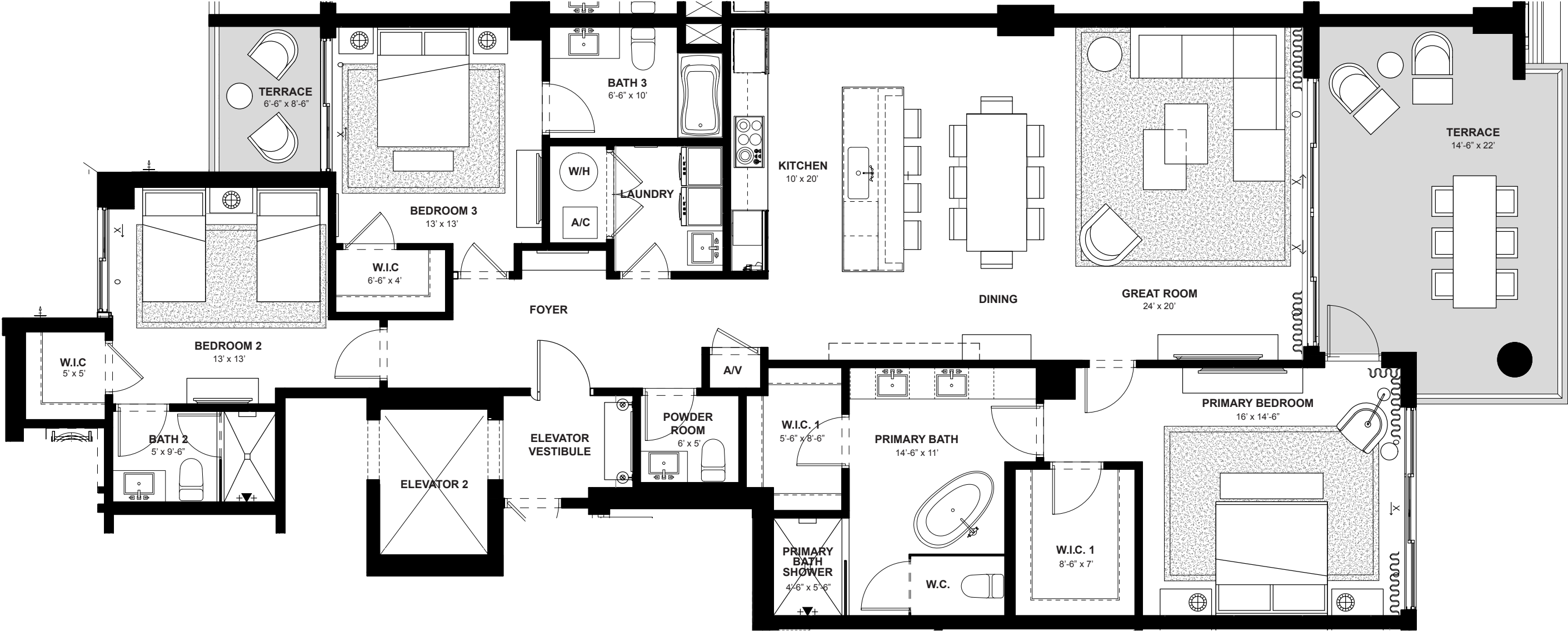
SOUTH/ EAST DIRECTION	3	3.5	2,308	365	2,673
	BEDROOMS	BATHS	A/C LIVING AREA	COVERED TERRACES	TOTAL S.F.

Artist's conceptual illustration only. Subject to modification.

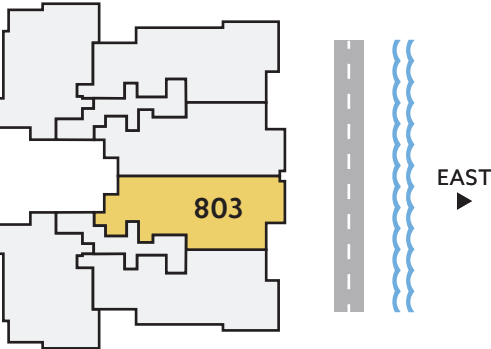
 ORAL REPRESENTATIONS CANNOT BE RELIED UPON AS CORRECTLY STATING REPRESENTATIONS OF THE SELLER. FOR CORRECT REPRESENTATIONS, MAKE REFERENCE TO THIS BROCHURE AND TO THE DOCUMENTS REQUIRED BY SECTION 718.503, FLORIDA STATUTES TO BE FURNISHED BY A SELLER TO A BUYER OR LESSEE.

All dimensions, features, and specifications are approximate and subject to change without notice. Square footage listed above represents marketing square footage (please refer to section 3.2 of the Declaration and Exhibit 5 for more information). Brokers warmly welcomed.

# Residence 803



EIGHTH FLOOR



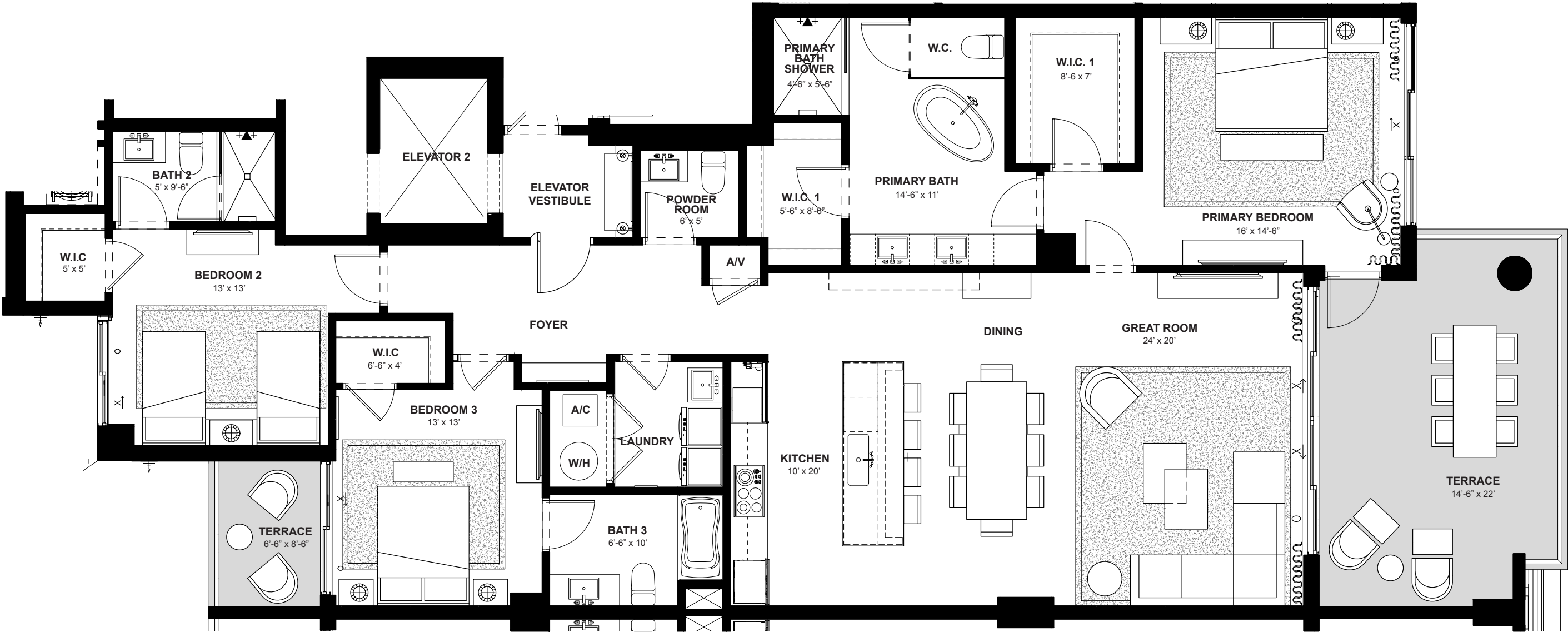
EAST DIRECTION	3 BEDROOMS	3.5 BATHS	2,132 A/C LIVING AREA	358 COVERED TERRACES	2,490 TOTAL S.F.
-------------------	---------------	--------------	-----------------------------	----------------------------	---------------------

Artist's conceptual illustration only. Subject to modification.

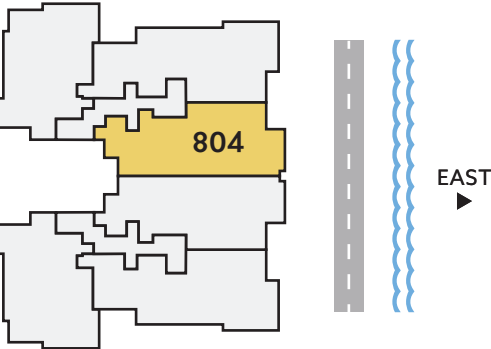
ORAL REPRESENTATIONS CANNOT BE RELIED UPON AS CORRECTLY STATING REPRESENTATIONS OF THE SELLER. FOR CORRECT REPRESENTATIONS, MAKE REFERENCE TO THIS BROCHURE AND TO THE DOCUMENTS REQUIRED BY SECTION 718.503, FLORIDA STATUTES TO BE FURNISHED BY A SELLER TO A BUYER OR LESSEE.

All dimensions, features, and specifications are approximate and subject to change without notice. Square footage listed above represents marketing square footage (please refer to section 3.2 of the Declaration and Exhibit 5 for more information). Brokers warmly welcomed.

# Residence 804




EIGHTH FLOOR



EAST DIRECTION	3 BEDROOMS	3.5 BATHS	2,132 A/C LIVING AREA	358 COVERED TERRACES	2,490 TOTAL S.F.
-------------------	---------------	--------------	-----------------------------	----------------------------	---------------------

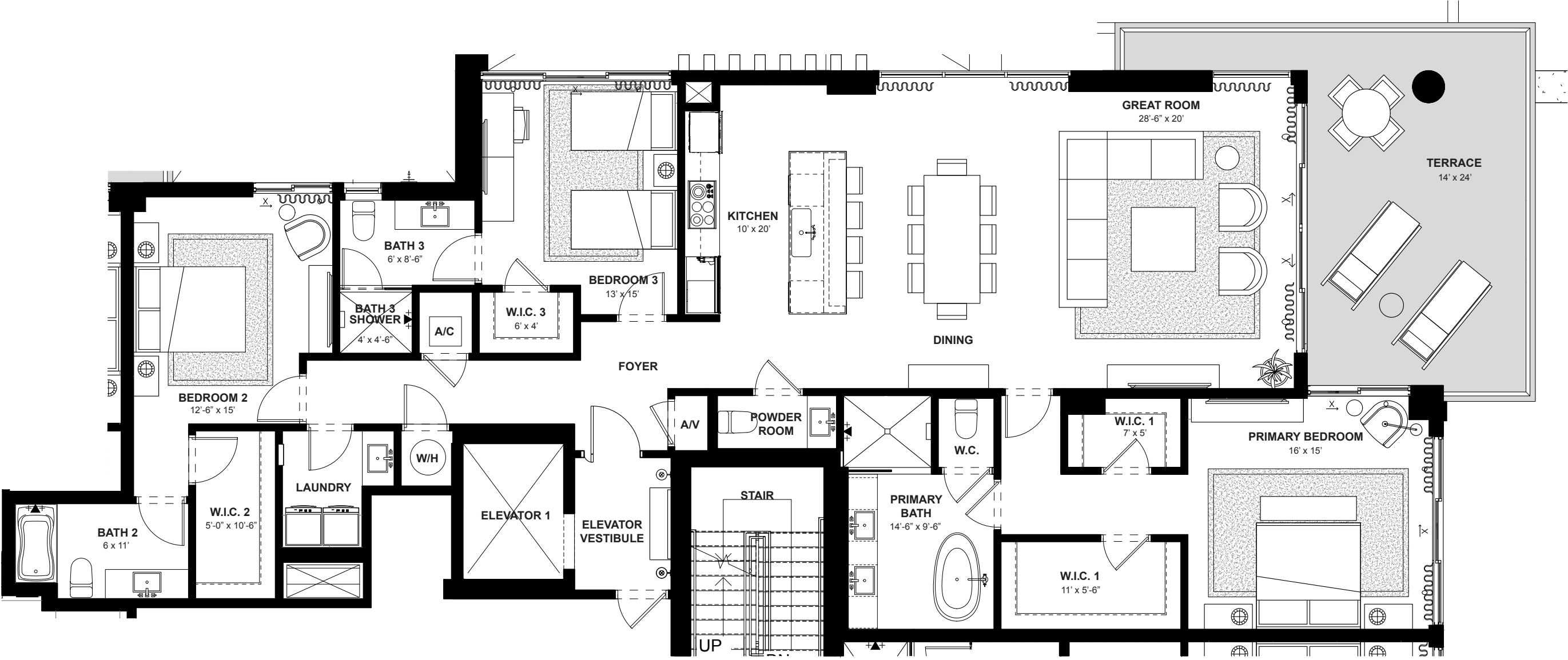
Artist's conceptual illustration only. Subject to modification.

 ORAL REPRESENTATIONS CANNOT BE RELIED UPON AS CORRECTLY STATING REPRESENTATIONS OF THE SELLER. FOR CORRECT REPRESENTATIONS, MAKE REFERENCE TO THIS BROCHURE AND TO THE DOCUMENTS REQUIRED BY SECTION 718.503, FLORIDA STATUTES TO BE FURNISHED BY A SELLER TO A BUYER OR LESSEE.

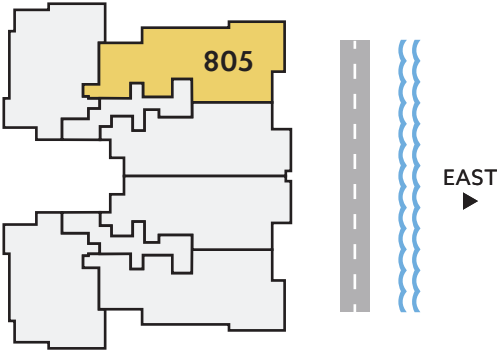
All dimensions, features, and specifications are approximate and subject to change without notice. Square footage listed above represents marketing square footage (please refer to section 3.2 of the Declaration and Exhibit 5 for more information). Brokers warmly welcomed.



# Residence 805



EIGHTH FLOOR



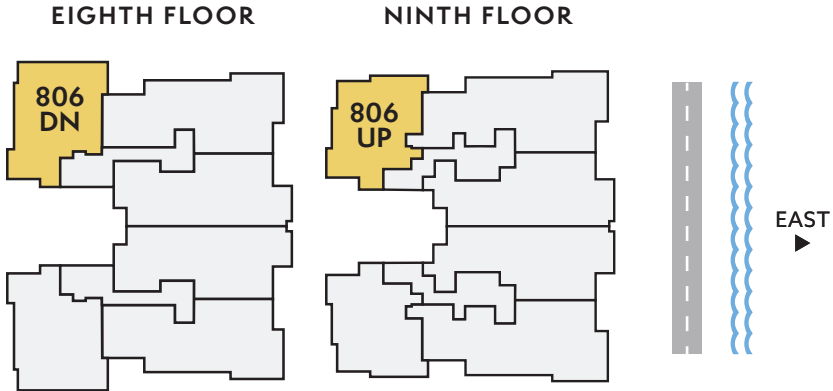
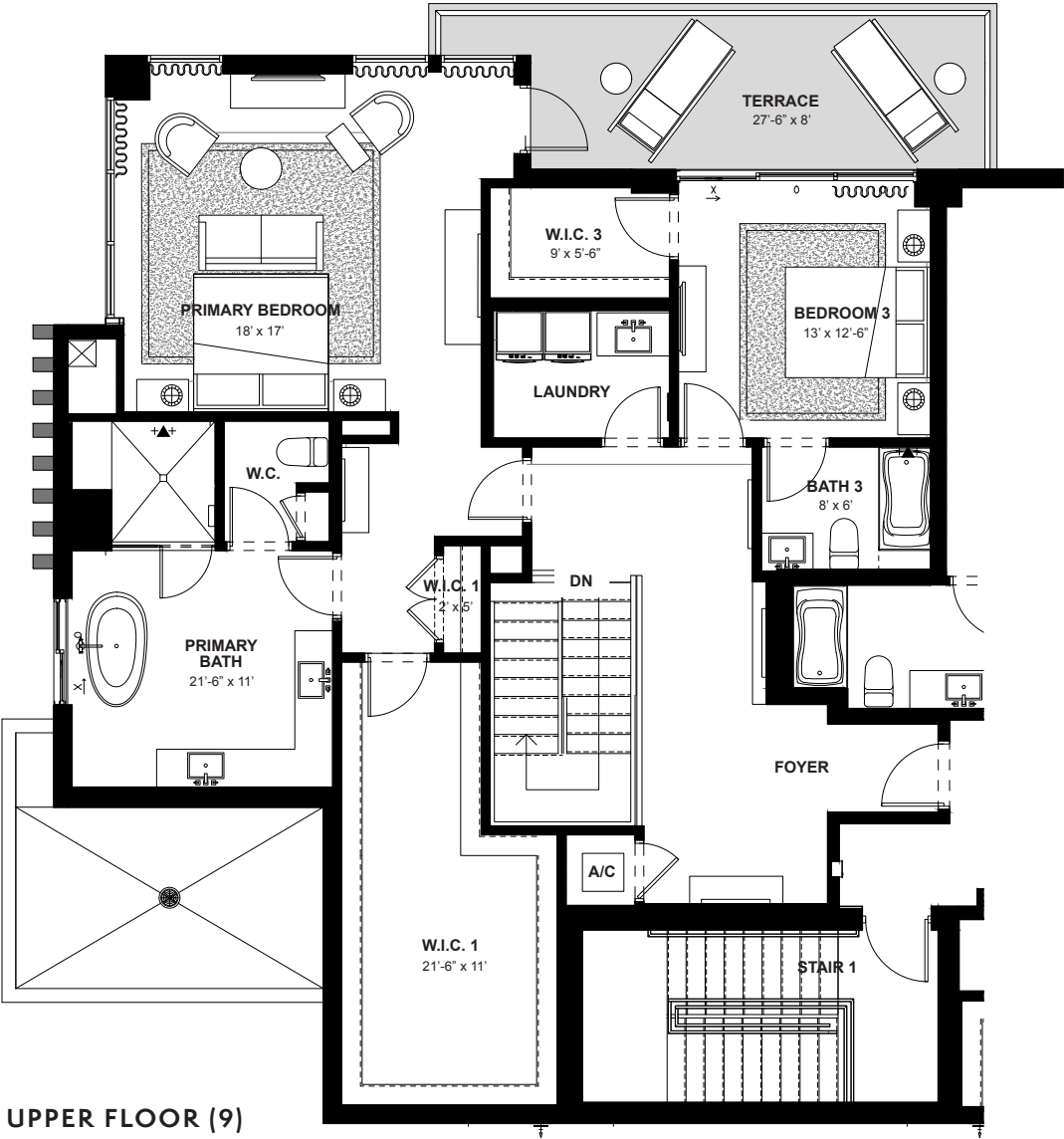
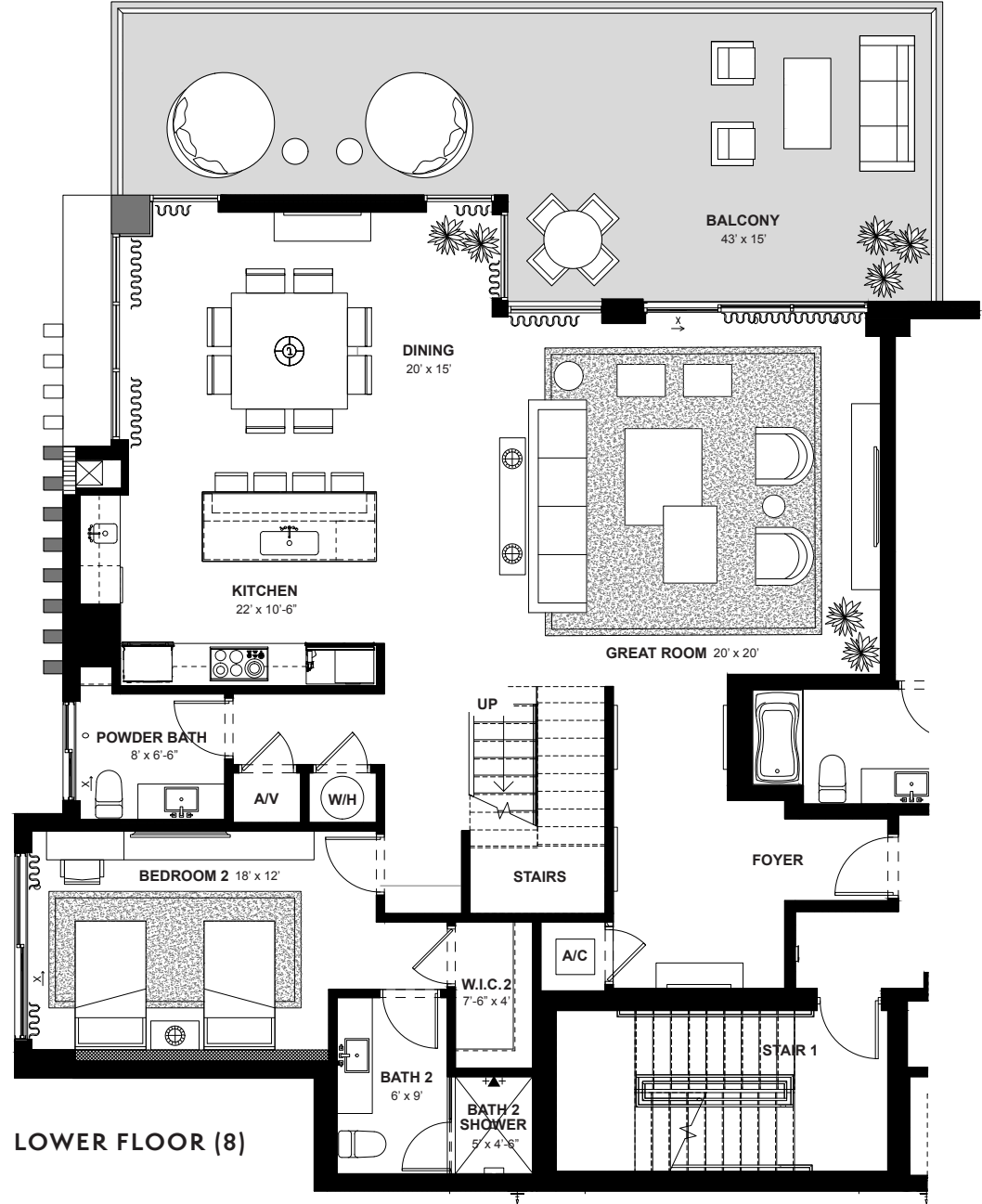
NORTH/ EAST DIRECTION	3	3.5	2,308	365	2,673
	BEDROOMS	BATHS	A/C LIVING AREA	COVERED TERRACES	TOTAL S.F.

Artist’s conceptual illustration only. Subject to modification.

ORAL REPRESENTATIONS CANNOT BE RELIED UPON AS CORRECTLY STATING REPRESENTATIONS OF THE SELLER. FOR CORRECT REPRESENTATIONS, MAKE REFERENCE TO THIS BROCHURE AND TO THE DOCUMENTS REQUIRED BY SECTION 718.503, FLORIDA STATUTES TO BE FURNISHED BY A SELLER TO A BUYER OR LESSEE.

All dimensions, features, and specifications are approximate and subject to change without notice. Square footage listed above represents marketing square footage (please refer to section 3.2 of the Declaration and Exhibit 5 for more information). Brokers warmly welcomed.

# Residence 806



NORTH/ WEST DIRECTION	3	3.5	3,354	746	4,100
	BEDROOMS	BATHS	A/C LIVING AREA	COVERED TERRACES	TOTAL S.F.

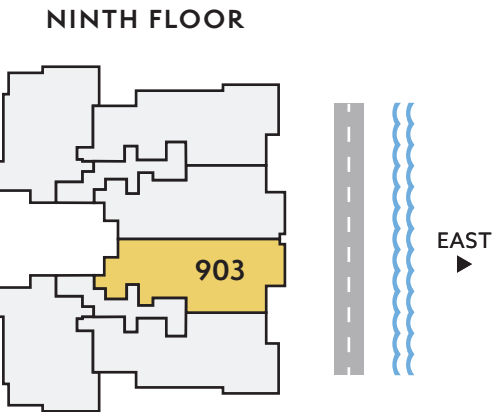
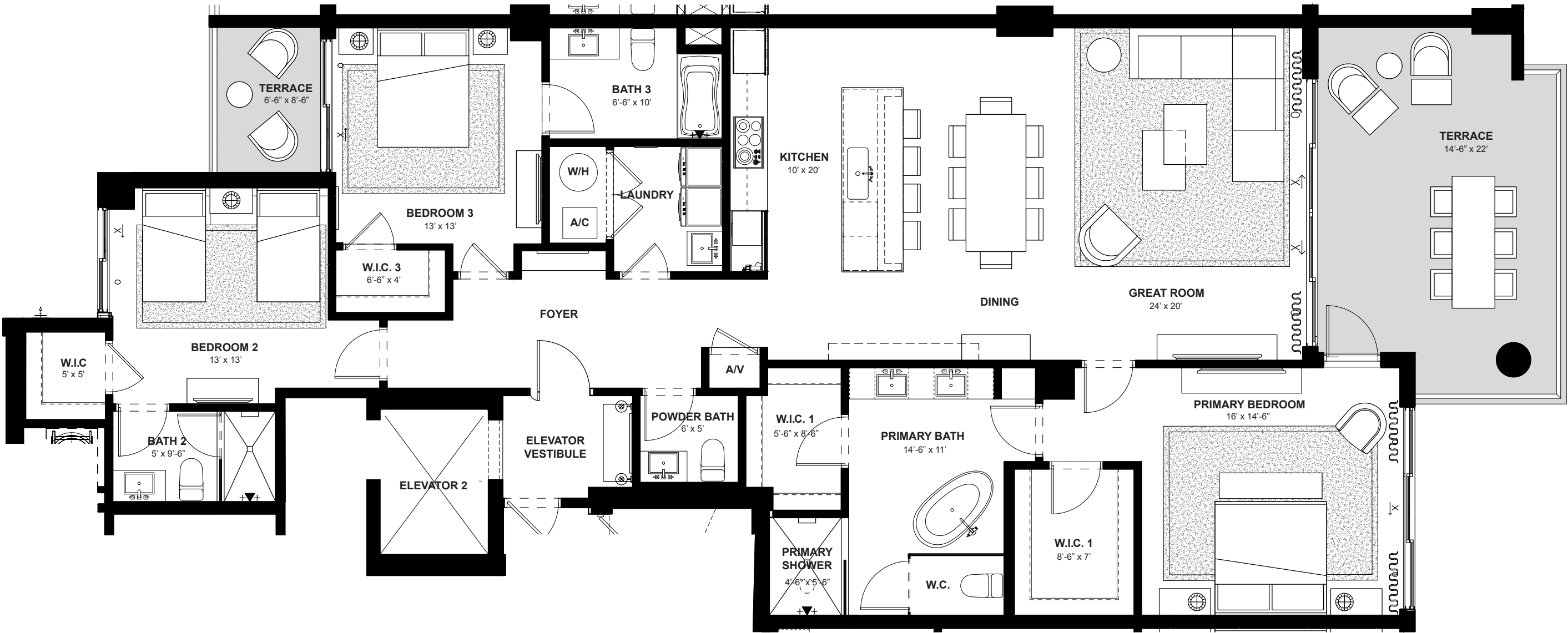
Artist's conceptual illustration only. Subject to modification.



ORAL REPRESENTATIONS CANNOT BE RELIED UPON AS CORRECTLY STATING REPRESENTATIONS OF THE SELLER. FOR CORRECT REPRESENTATIONS, MAKE REFERENCE TO THIS BROCHURE AND TO THE DOCUMENTS REQUIRED BY SECTION 718.503, FLORIDA STATUTES TO BE FURNISHED BY A SELLER TO A BUYER OR LESSEE.


All dimensions, features, and specifications are approximate and subject to change without notice. Square footage listed above represents marketing square footage (please refer to section 3.2 of the Declaration and Exhibit 5 for more information). Brokers warmly welcomed.

Residence 903



EAST DIRECTION	3 BEDROOMS	3.5 BATHS	2,132 A/C LIVING AREA	358 COVERED TERRACES	2,490 TOTAL S.F.
-------------------	---------------	--------------	-----------------------------	----------------------------	---------------------

Artist’s conceptual illustration only. Subject to modification.

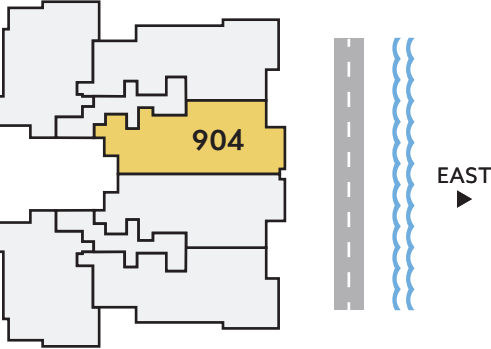
 ORAL REPRESENTATIONS CANNOT BE RELIED UPON AS CORRECTLY STATING REPRESENTATIONS OF THE SELLER. FOR CORRECT REPRESENTATIONS, MAKE REFERENCE TO THIS BROCHURE AND TO THE DOCUMENTS REQUIRED BY SECTION 718.503, FLORIDA STATUTES TO BE FURNISHED BY A SELLER TO A BUYER OR LESSEE.

All dimensions, features, and specifications are approximate and subject to change without notice. Square footage listed above represents marketing square footage (please refer to section 3.2 of the Declaration and Exhibit 5 for more information). Brokers warmly welcomed.

# Residence 904




NINTH FLOOR



EAST DIRECTION	3 BEDROOMS	3.5 BATHS	2,132 A/C LIVING AREA	358 COVERED TERRACES	2,490 TOTAL S.F.
-------------------	---------------	--------------	-----------------------------	----------------------------	---------------------

Artist's conceptual illustration only. Subject to modification.

 ORAL REPRESENTATIONS CANNOT BE RELIED UPON AS CORRECTLY STATING REPRESENTATIONS OF THE SELLER. FOR CORRECT REPRESENTATIONS, MAKE REFERENCE TO THIS BROCHURE AND TO THE DOCUMENTS REQUIRED BY SECTION 718.503, FLORIDA STATUTES TO BE FURNISHED BY A SELLER TO A BUYER OR LESSEE.  
All dimensions, features, and specifications are approximate and subject to change without notice. Square footage listed above represents marketing square footage (please refer to section 3.2 of the Declaration and Exhibit 5 for more information). Brokers warmly welcomed.