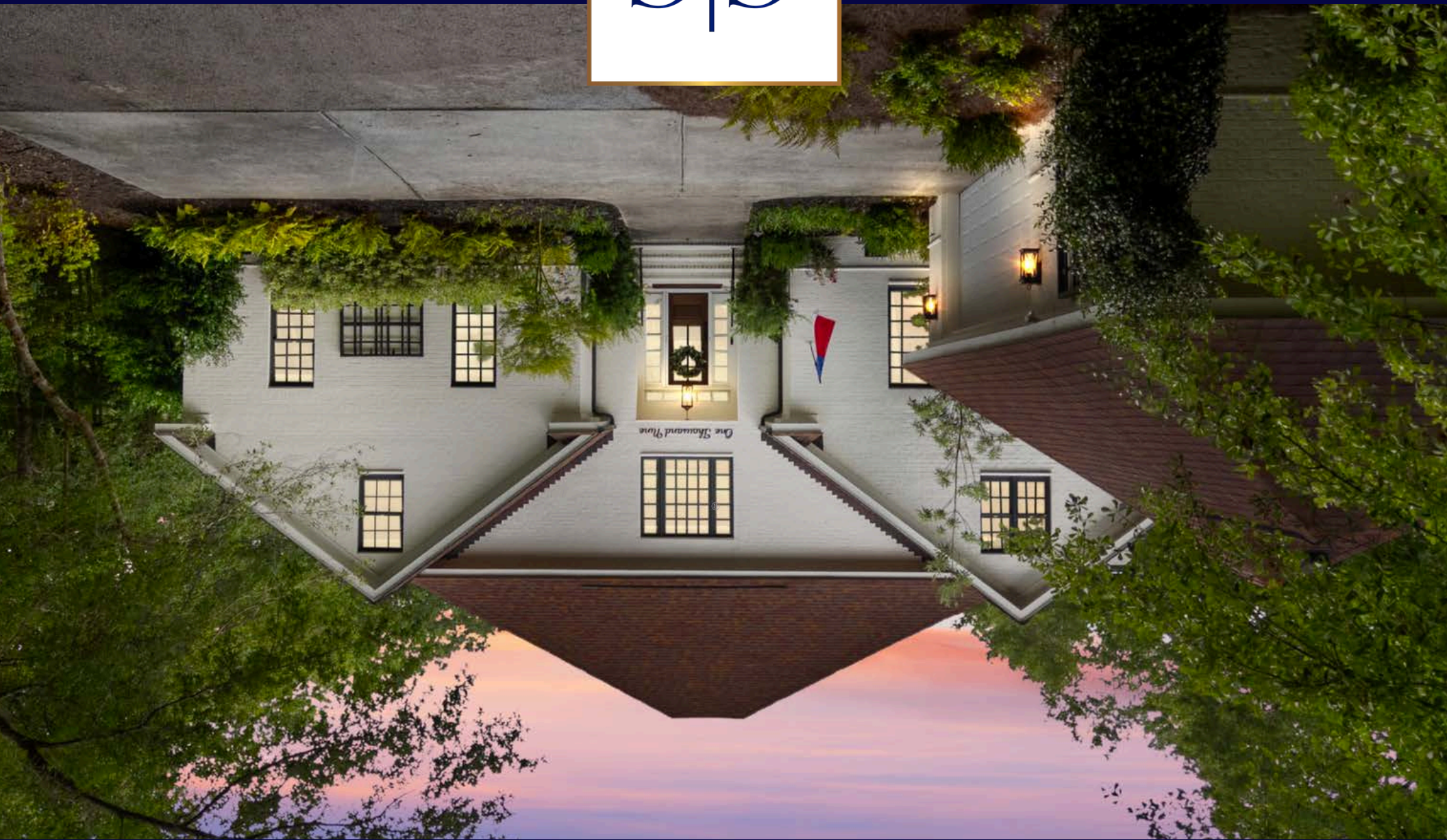




WILMINGTON, NC

1009 CREEKSIDE LN,



CapToCoastNC.com



Elegant 5-bedroom, 5-bath waterfront brick home nestled in a serene, wooded setting with breathtaking views of Futch Creek. This beautifully maintained residence offers a private pier—perfect for kayaking or launching a small boat—and features professionally landscaped grounds with newer sod and a full irrigation system. Step inside to find a light-filled living room with expansive water views. The kitchen has been fully updated with upgraded stainless steel Jenn-Air appliances, including a gas range, brand-new custom cabinetry, and thoughtfully designed storage. It opens to a cozy family room, and casual dining area creating an ideal space for entertaining or everyday living. Off of the casual area is a large living room with two story ceilings and a breathtaking view! The downstairs master suite is a large tranquil retreat with peaceful creek views, a walk-in closet, and a spacious en-suite bath featuring his and her sinks and large walk-in custom marble shower.

A guest bedroom or office completes the main level, complete with its own private full bath. Up the winding staircase, you'll find three additional bedrooms, three full bathrooms, and a versatile loft space. All five bathrooms have been extensively remodeled with high-end finishes. Off the garage, a 13 x 9 climate-controlled room offers amazing storage perfect for beach gear or wine bottles perfect for beach goers or wine enthusiasts alike. Additional highlights include a stunning mahogany front door, access to the Intracoastal Waterway via the neighborhood's private ramp, and a community picnic area. Just minutes from Porters Neck Country Club, where optional golf and tennis memberships may be available.



919.349.2220

CapToCoastNC.com
Pam@CapToCoastRealty.com

501 Keisler Dr, Ste 101, Cary, NC 27518
1209 Culbreth, Ste 210, Wilmington, NC 28405



PAMELA
SAXMAN

OWNER, BROKER



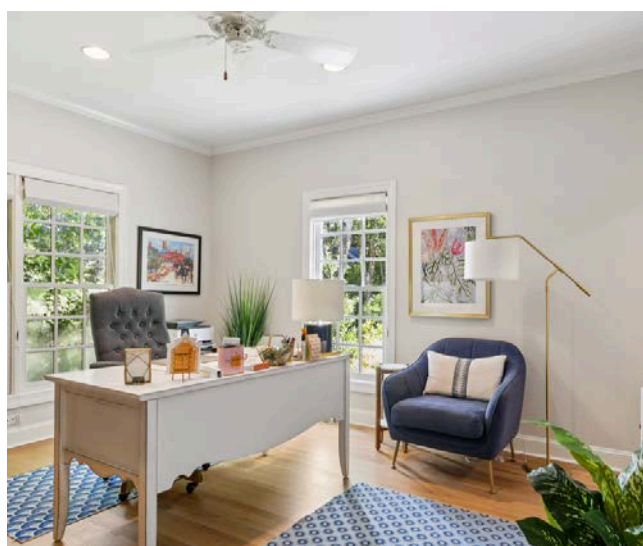
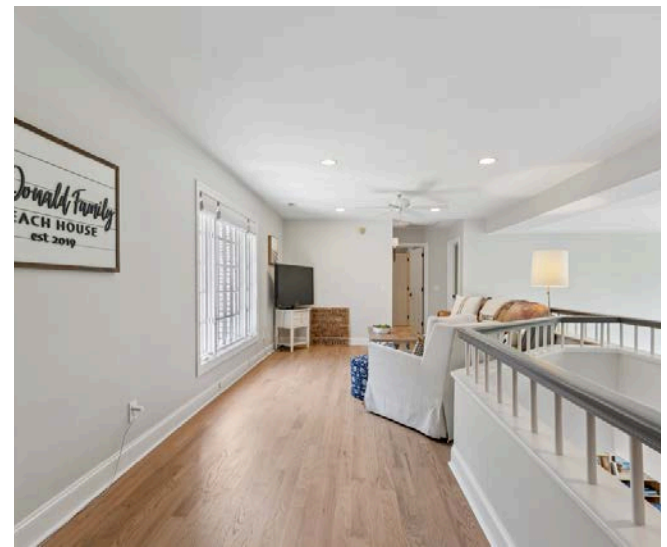
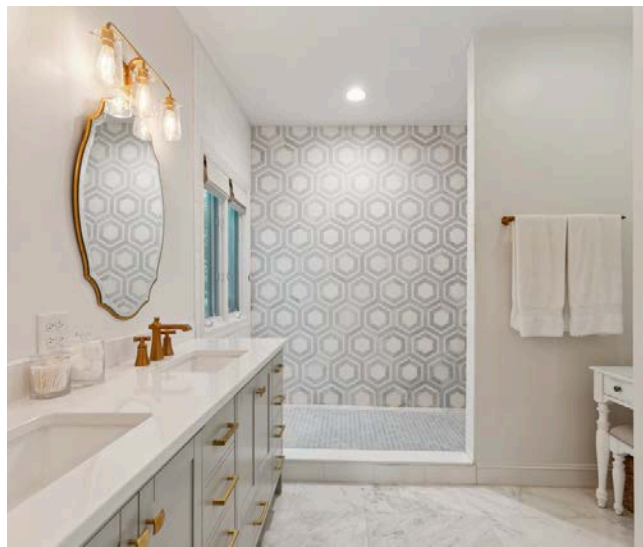
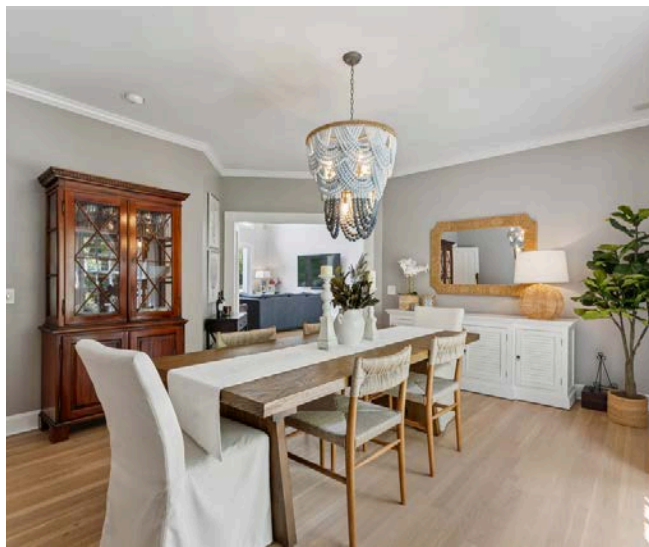
1009 CREEKSIDE LN, WILMINGTON, NC



- Extensive Futch Creek Marsh Views from living to master bedroom
- All 5 bathrooms have been extensively renovated with high end finishes
- Upgraded Jenn Aire appliances
- Custom kitchen cabinets including built in storage
- Hardwoods throughout main floor and upstairs loft
- Mahogany front door
- Private dock
- Fenced, professionally landscaped backyard with irrigation
- Neighborhood has ICW access including a boat ramp and picnic area
- Proximity to Porters Neck Country Club for additional amenities



VIRTUAL TOUR



Waterfront brick home with private pier, stunning creek views, and luxury updates throughout.